

*Parts Manual for*

# **SNAPPER®**

## **82 VOLT BATTERY POWERED 16" HANDHELD STRING TRIMMER**



<i>Model No.</i>	<i>Description</i>
1696771-00	16" String Trimmer
1696772-00	16" String Trimmer - EU

**Briggs & Stratton Yard Power Products Group**

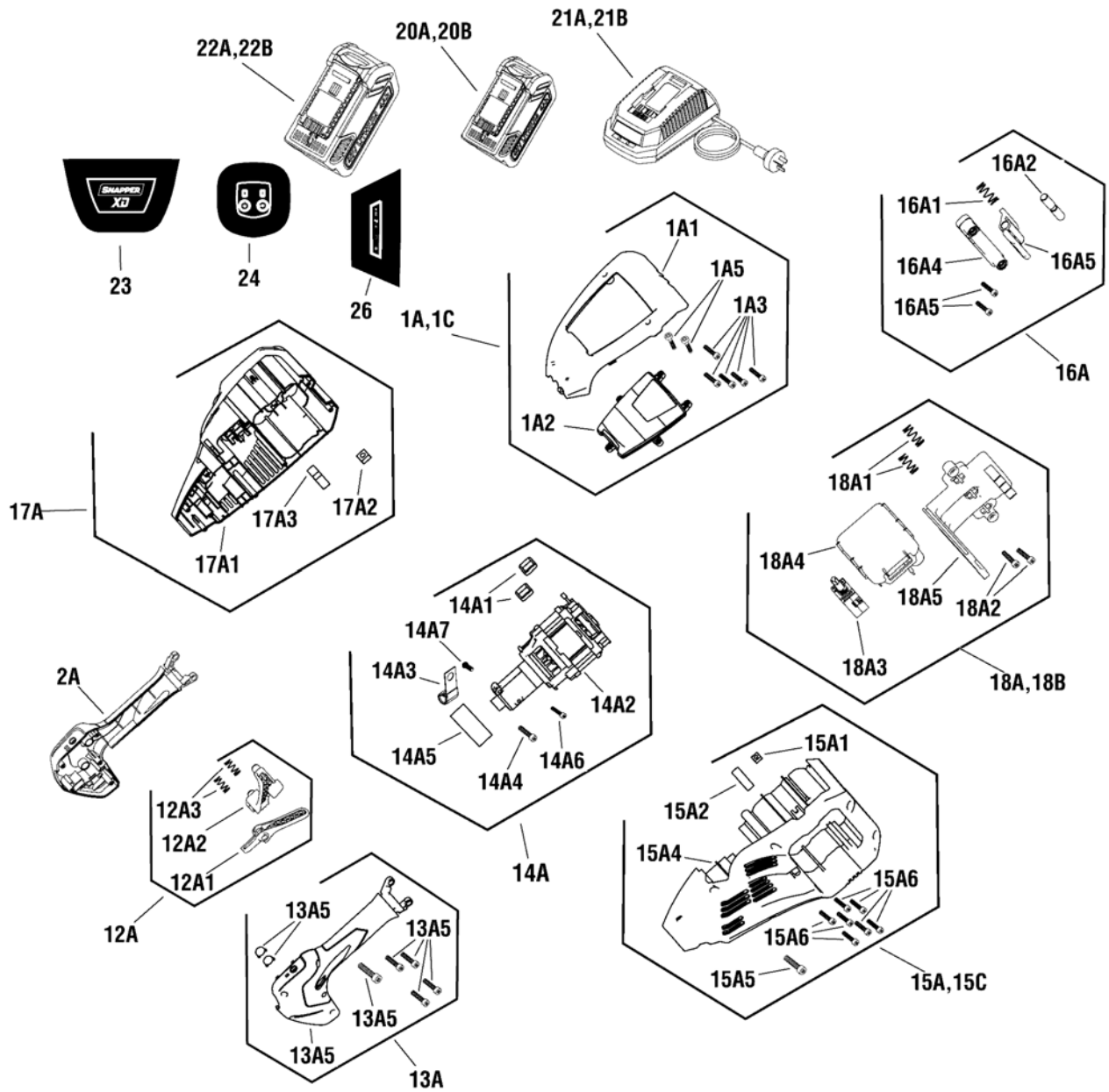
3515 N. 124 Street / PO Box 702  
Wauwatosa, WI 53222 U.S.A.  
800-935-2967

**Manual No.** 1760804  
**Revision:** - 8/30/2016

Not for  
Reproduction

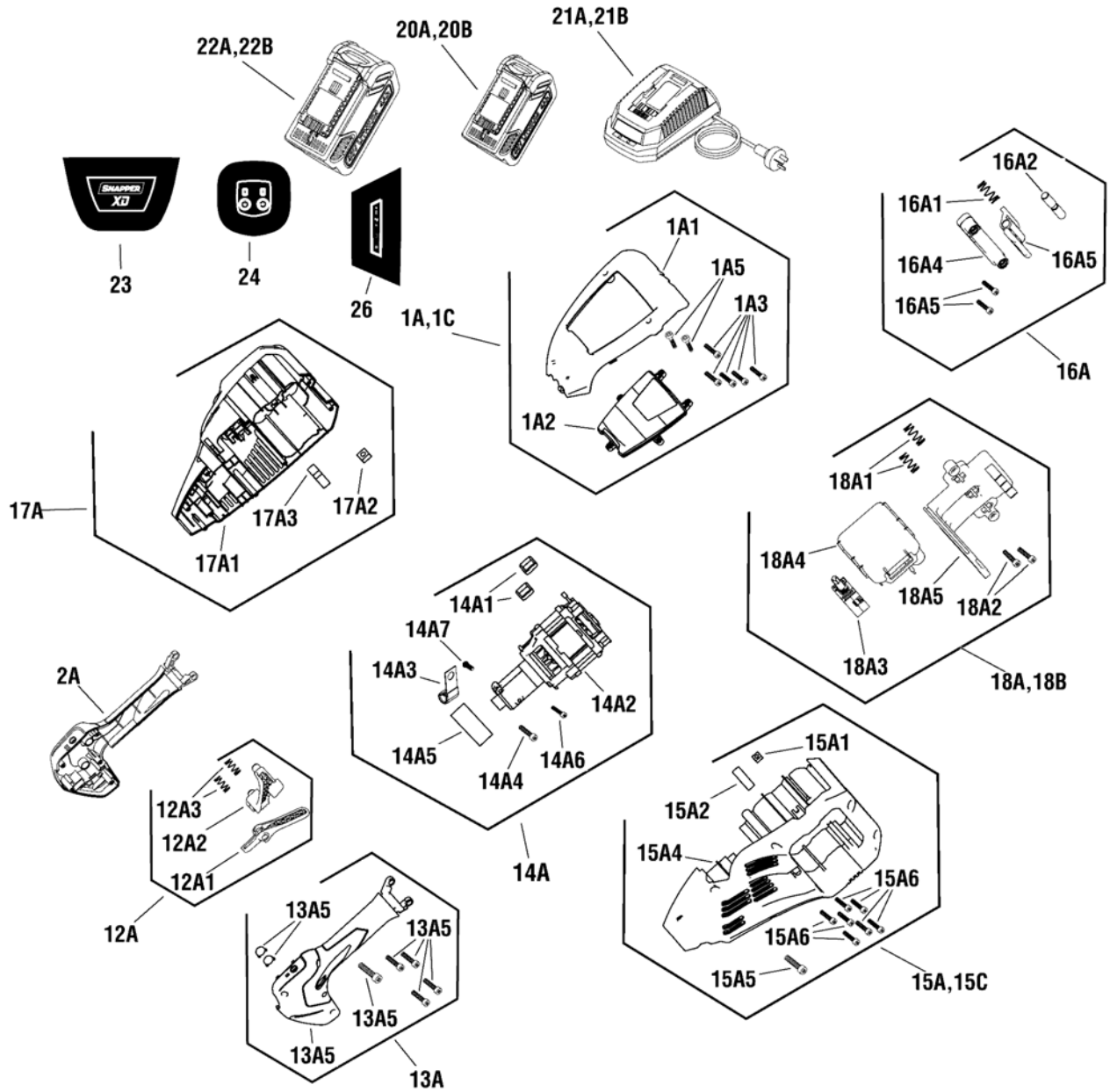
<b>PAGE</b>	<b>GROUP</b>
4	Powerhead Group
8	Shaft & Bumphead Group

Not for  
Reproduction



<b>Item</b>	<b>Part No</b>	<b>Qty</b>	<b>Description</b>
1A	770148	1	KIT, HOUSING TOP COVER, NA (incl. Ref. 1A1 through 1A5)
1C	770405	1	KIT, HOUSING TOP COVER, EU (incl. Ref. 1A1 through 1A5)
1A1	----	1	COVER, TOP
1A2	----	1	INSERT, TOP COVER
1A3	----	5	SCREW
1A5	----	2	SCREW
2A	770149	1	HANDLE, RIGHT, NA & EU
12A	770159	1	KIT, SWITCH AND LOCK-OUT BUTTON (Incl. Ref. 12A1 through 12A3)
12A1	----	1	BUTTON, LOCK-OUT
12A2	----	1	BUTTON, LOCK-OUT
12A3	----	1	TRIGGER
13A	770160	1	KIT, LEFT HANDLE, NA & EU (Incl. Ref. 13A2 through 13A5)
13A2	----	2	BUTTON, PCB
13A3	----	1	HOUSING, HANDLE LEFT
13A4	----	1	SCREW
13A5	----	4	SCREW
14A	770162	1	KIT, MOTOR AND SWITCH (Incl. Ref. 14A1 through 14A7)
14A1	----	2	BRACKET, RUBBER PLATE
14A2	----	1	MOTOR
14A3	----	1	CLIP
14A4	----	1	SCREW
14A5	----	1	BRACKET , RUBBER PLATE
14A6	----	1	SCREW
14A7	----	1	SCREW
15A	770163	1	KIT, LEFT HOUSING, NA (Incl. Ref. 15A1 through 15A6)
15C	770413	1	KIT, LEFT HOUSING, EU (Incl. Ref. 15A1 through 15A6)
15A1	----	1	BOLT
15A2	----	1	BRACKET, RUBBER PLATE
15A4	----	1	HOUSING, MOTOR
15A5	----	1	SCREW
15A6	----	7	SCREW
16A	770164	1	KIT, BATTERY RELEASE BUTTON (Incl. Ref. 16A1 through 16A5)
16A1	----	1	SPRING
16A2	----	1	PIN
16A3	----	1	BUTTON, BATTERY RELEASE
16A4	----	1	BRACKET, PRESS PLATE
16A5	----	2	SCREW
17A	770165	1	KIT, RIGHT HOUSING (Incl. Ref. 17A1 through 17A3)
17A1	----	1	HOUSING, MOTOR
17A2	----	1	SCREW
17A3	----	1	BRACKET, RUBBER PLATE
18A	770166	1	KIT, PCB, NA (Incl. Ref. 18A1 through 18A5)

**Footnotes:**

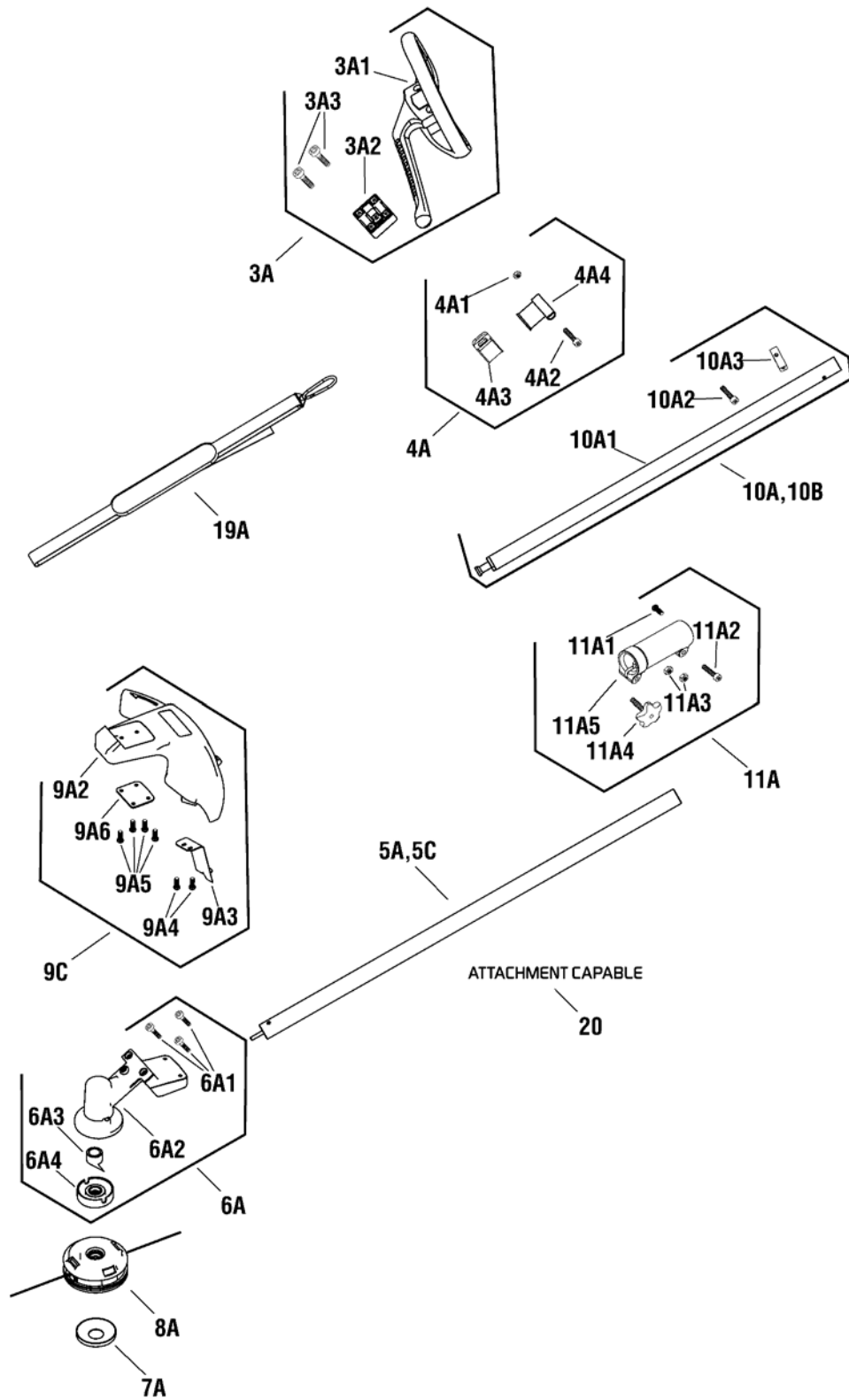


---

<b>Item</b>	<b>Part No</b>	<b>Qty</b>	<b>Description</b>
18B	770414	1	KIT, PCB, AU & EU
18A1	-----	2	SPRING
18A2	-----	2	SCREW
18A3	-----	1	SWITCH
18A4	-----	1	PCB
18A5	-----	1	BRACKET, INSERT PLATE
20A	1760266	1	BATTERY, 2AH, NA (OPTION)
20B	1760514	1	BATTERY, 2AH, EU (OPTION)
21A	1760263	1	CHARGER, RAPID, NA (OPTION)
21B	1760264	1	CHARGER, RAPID, EU (OPTION)
22A	1760265	1	BATTERY, 4AH, NA (OPTION)
22B	1760515	1	BATTERY, 4AH, EU (OPTION)
23	770487	1	DECAL, SNAPPER XD SHROUD
24	770789	1	DECAL, SNAPPER XD CONTROL
26	770496	1	DECAL, CHARGER INDICATOR

Not for  
Reproduction

**Footnotes:**





<b>Item</b>	<b>Part No</b>	<b>Qty</b>	<b>Description</b>
3A	770150	1	KIT, AUXILIARY HANDLE
3A1	----	1	HANDLE, AUXILIARY
3A2	----	1	BASE, AUXILIARY HANDLE
3A3	----	4	SCREW
4A	770151	1	KIT, HARNESS CLAMP
4A1	----	1	BOLT
4A2	----	1	SCREW
4A3	----	1	CLAMP, HARNESS
4A4	----	1	CLIP, HARNESS
5A	770153	1	SHAFT, BOTTOM, NA
5C	770407	1	SHAFT, BOTTOM, EU
6A	770152	1	KIT, GEAR BOX ASSEMBLY
6A1	----	3	SCREW
6A2	----	1	ASSEMBLY, GEAR BOX
6A3	----	1	SLEEVE, AXLE
6A4	----	1	BASE, BLADE FIXED
7A	770154	1	PLATE, GRASS PREVENTION
8A	770155	1	HEAD, STRING, NA & EU
9C	770383	1	KIT, GUARD ASSEMBLY, NA & EU
9A2	----	1	GUARD
9A3	----	1	BLADE
9A4	----	2	SCREW
9A5	----	4	BOLT
9A6	----	1	BRACKET, GUARD PLATE
10A	770157	1	KIT, TOP SHAFT, NA
10B	770410	1	KIT, TOP SHAFT, AU & EU
10A1	----	1	SHAFT, TOP
10A2	----	1	SCREW
10A3	----	1	CLIP
11A	770158	1	KIT, COUPLING ASSEMBLY
11A1	----	1	BOLT
11A2	----	1	SCREW
11A3	----	2	BOLT
11A4	----	1	BOLT, T
11A5	----	1	COUPLING
--	----	1	DECAL, SNAPPER XD SHAFT
19A	770167	1	KIT. HARNESS
20	770488	1	DECAL, SNAPPER XD SHAFT

**Footnotes:**

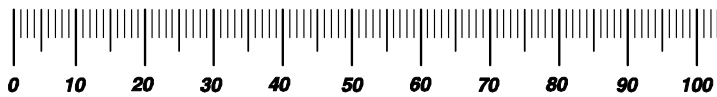
Not for  
Reproduction

# Hardware Identification & Torque Specifications

Torque Specification Chart								
FOR STANDARD METRIC MACHINE HARDWARE (Tolerance ± 20%)								
Property Class	5.6		8.8		10.9		12.9	
	Class 5.6		Class 8.8		Class 10.9		Class 12.9	
Size Of Hardware	in/lbs		in/lbs		in/lbs		in/lbs	
	ft/lbs	Nm.	ft/lbs	Nm.	ft/lbs	Nm.	ft/lbs	Nm.
M3	5.88	.56	13.44	1.28	19.2	1.80	22.92	2.15
M4	13.44	1.28	30.72	2.90	43.44	4.10	52.56	4.95
M5	26.4	2.50	60.96	5.75	5.97	8.10	7.15	9.7
M6	44.64	4.3	7.3	9.9	10.3	14	12.1	16.5
M7	5.2	7.1	12.1	16.5	16.9	23	19.9	27
M8	7.7	10.5	17.7	24	25	34	29	40
M10	15	21	35	48	50	67	59	81
M12	26	36	61	83	86.2	117	103	140
M14	42	58	101	132	136	185	162	220
M16	64	88	147	200	210	285	250	340
M18	89	121	202	275	287	390	346	470
M20	126	171	290	390	405	550	486	660
M22	169	230	390	530	559	745	656	890
M24	217	295	497	375	708	960	840	1140
M27	320	435	733	995	1032	1400	1239	1680
M30	435	590	995	1350	1401	1900	1681	2280
M33	590	800	1349	1830	1902	2580	2278	3090
M36	759	1030	1740	2360	2441	3310	2935	3980
M39	988	1340	2249	3050	3163	4290	3798	5150

Torque Specification Chart						
FOR STANDARD MACHINE HARDWARE (Tolerance ± 20%)						
Hardware Grade	No Marks		SAE Grade 5		SAE Grade 8	
	SAE Grade 2		SAE Grade 5		SAE Grade 8	
Size Of Hardware	in/lbs		in/lbs		in/lbs	
	ft/lbs	Nm.	ft/lbs	Nm.	ft/lbs	Nm.
8-32	19	2.1	30	3.4	41	4.6
8-36	20	2.3	31	3.5	43	4.9
10-24	27	3.1	43	4.9	60	6.8
10-32	31	3.5	49	5.5	68	7.7
1/4-20	66	7.6	8	10.9	12	16.3
1/4-28	76	8.6	10	13.6	14	19.0
5/16-18	11	15.0	17	23.1	25	34.0
5/16-24	12	16.3	19	25.8	29	34.0
3/8-16	20	27.2	30	40.8	45	61.2
3/8-24	23	31.3	35	47.6	50	68.0
7/16-14	30	40.8	50	68.0	70	95.2
7/16-20	35	47.6	55	74.8	80	108.8
1/2-13	50	68.0	75	102.0	110	149.6
1/2-20	55	74.8	90	122.4	120	163.2
9/16-12	65	88.4	110	149.6	150	204.0
9/16-18	75	102.0	120	163.2	170	231.2
5/8-11	90	122.4	150	204.0	220	299.2
5/8-18	100	136	180	244.8	240	326.4
3/4-10	160	217.6	260	353.6	386	525.0
3/4-16	180	244.8	300	408.0	420	571.2
7/8-9	140	190.4	400	544.0	600	816.0
7/8-14	155	210.8	440	598.4	660	897.6
1-8	220	299.2	580	788.8	900	1,244.0
1-12	240	326.4	640	870.4	1,000	1,360.0

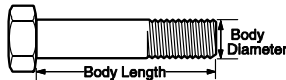
The guides and ruler furnished below are designed to help you select the appropriate hardware.



Nut, M8

Thread Diameter (mm)  
Inside Diameter (in)    Threads per inch

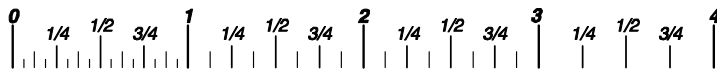
Nut, 1/2-16



Screw, M8- 1.25 x 25

Thread Diameter (mm)    Distance between threads (mm)    Body Length (mm)  
Body Diameter    Threads per inch    Body Length (in)

Screw, 1/2- 16 x 2



## Standard Hardware Sizing

When a washer or nut is identified as 1/2" (M8), this is the *Nominal size*, meaning the *inside diameter* is 1/2 inch (8mm metric thread diameter); if a second number is present it represents the *threads per inch* (distance between threads).

When bolt or capscrew is identified as 1/2 - 16 x 2" (M8 - 1.25 x 50), this means the *Nominal size*, or body diameter is 1/2 inch (8mm metric thread diameter), the second number, 16, represents the *threads per inch*, (1.25 thread diameter). The final number is the body length of the bolt or screw, 2 inches (50mm).

## NOTES

- These torque values are to be used for all hardware excluding: locknuts, self-tapping screws, thread forming screws, sheet metal screws and socket head setscrews.
- Recommended seating torque values for locknuts:
  - for prevailing torque locknuts - use 65% of grade5 torques.
  - for flange whizlock nuts and screws - use 135% of grade 5 torques.
- Unless otherwise noted on assembly drawings, all torque values must meet this specification.

## Common Hardware Types

Hex Head Capscrew



Washer



Carriage Bolt



Lockwasher



Hex Nut



## Wrench & Fastener Size Guide

1/4" Bolt or Nut Wrench—7/16"	5/16" Bolt or Nut Wrench—1/2"	3/8" Bolt or Nut Wrench—9/16"	7/16" Bolt or Nut Wrench (Bolt)—5/8" Wrench (Nut)—11/16"	1/2" Bolt or Nut Wrench—3/4"
M6 Bolt or Nut Wrench—10mm	M8 Bolt or Nut Wrench—13mm	M10 Bolt or Nut Wrench—17mm	M12 Bolt or Nut Wrench—19mm	M14 Bolt or Nut Wrench—22mm

*Parts Manual for*

# **SNAPPER®**

## **82 VOLT BATTERY POWERED 16" HANDHELD STRING TRIMMER**

Not for  
Reproduction

IT IS THE POLICY OF BRIGGS & STRATTON CORP TO IMPROVE ITS PRODUCTS WHENEVER IT IS POSSIBLE AND PRACTICAL TO DO SO. WE RESERVE THE RIGHT TO MAKE CHANGES OR ADD IMPROVEMENTS AT ANY TIME WITHOUT INCURRING ANY OBLIGATION TO MAKE SUCH CHANGES ON PRODUCTS

**Briggs & Stratton Yard Power Products Group**

3515 N. 124 Street / PO Box 702  
Wauwatosa, WI 53222 U.S.A.  
800-935-2967

[www.snapper.com](http://www.snapper.com)

Copyright © 2016 Briggs & Stratton Corporation  
Milwaukee, WI USA. All Rights Reserved

**Manual No. 1760804**

**Revision: - 8/30/2016**